

# TTS-SC

Software

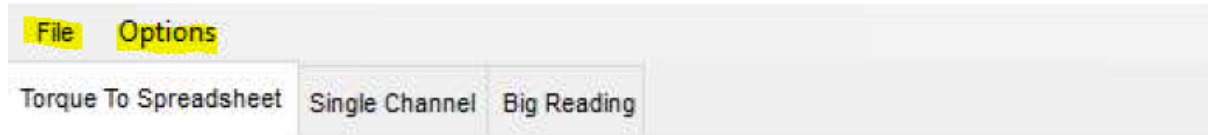
## Table of content

<b>1. Torque To Spreadsheet Application Tab and Options</b> .....	<b>2</b>
1.1 File Tab.....	2
1.2 Options Tab.....	2
<b>2. Torque To Spreadsheet</b> .....	<b>3</b>
2.1 Overview.....	3
<b>3. Single Channel</b> .....	<b>4</b>
3.1 Overview.....	4
3.2 Instruction.....	5
<b>4. Big Reading</b> .....	<b>7</b>
4.1 Overview.....	7

# TTS-SC

## Software

### 1. Torque To Spreadsheet Application Tab and Options



#### 1.1 File Tab

- **Open:** Opens pop up window for selecting directory and files.
- **Restart App:** restart application. All Current Readings will be lost.
- **Define Quick Export Path:** Define a Folder to Export Excel. This folder applies for Single Channel Quick Export, Dual Channel Quick Export and Calibration Excel Export.
- **About:** Copyright, version and contact information.
- **Exit:** exits the application

#### 1.2 Options Tab

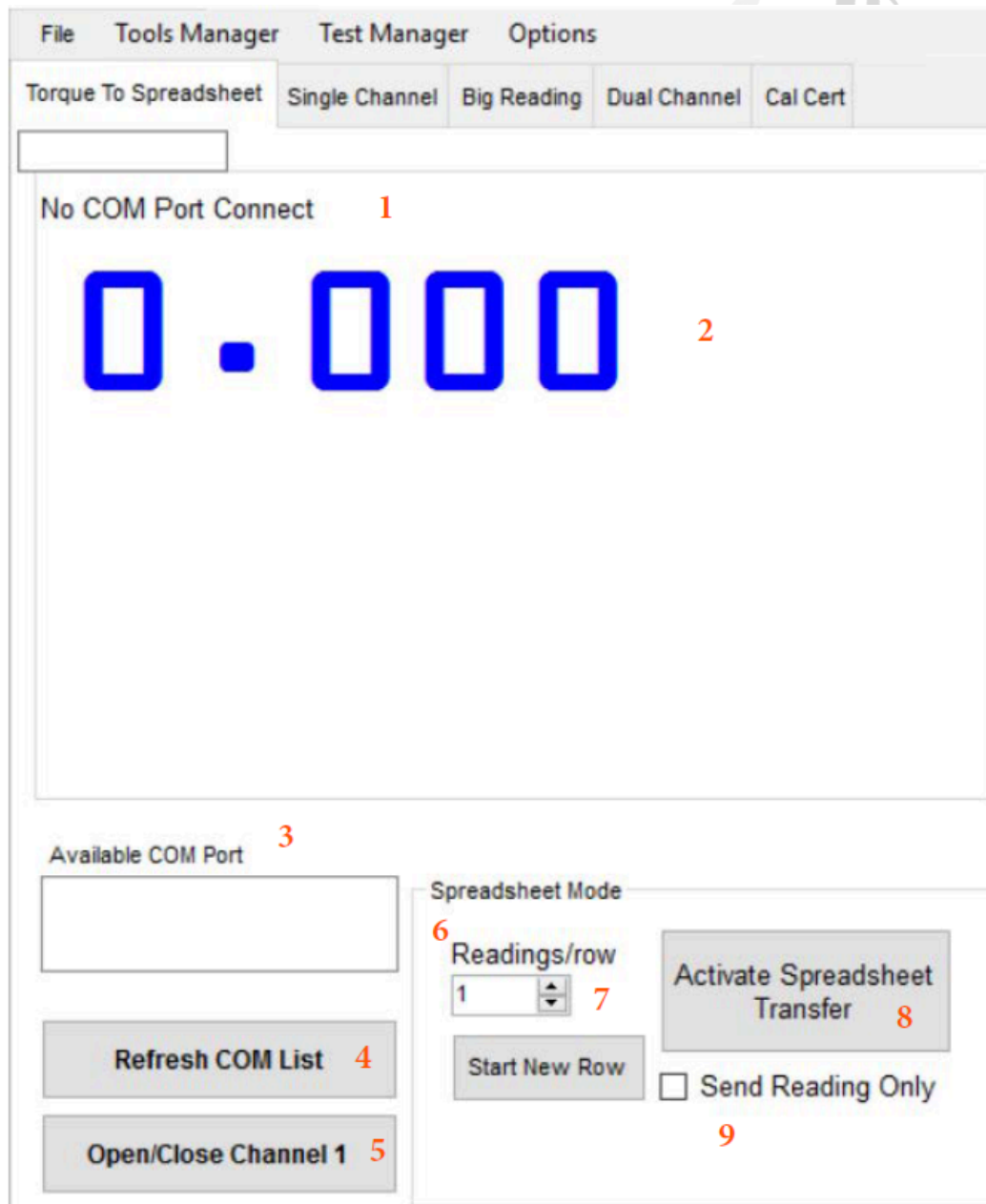
- **Always on Top:** Keep this Application on Top of other Applications.
- **Time Date Stamp:** Include Time and Date along with the Readings-only works in Torque to Spreadsheet.
- **Show ALL COM available:** only turn on this Option if the software is unable to find the connected device.
- **Enable Live Reading:** Turn on by Default. This Option shows the Reading of the Tester that is connected to the software.
- **Overwrite Data at Cursor:** only applies for Single Channel and Dual Channel mode. Turning on this option will record Reading to the Row that user is currently selecting on Grid View.
- **Force Auto-clear:** Forces the device to AutoCLR captured reading.
- **Auto Update:** If application is connected to the internet and company IT department allows the application will automatically update.
- **Check for Update:** If connected to the internet sends a query to our system for any updates.

## 2. Torque To Spreadsheet

### 2.1 Overview

This is the most basic application module that allows user make use of SPREADSHEET MODE.

### 2.2 Instruction



1. Show the current COM Port Connected and Full Scale of Tester that is connected
2. Shows Live Reading and Measurement Units of the Tester Connected.

# TTS-SC

## Software

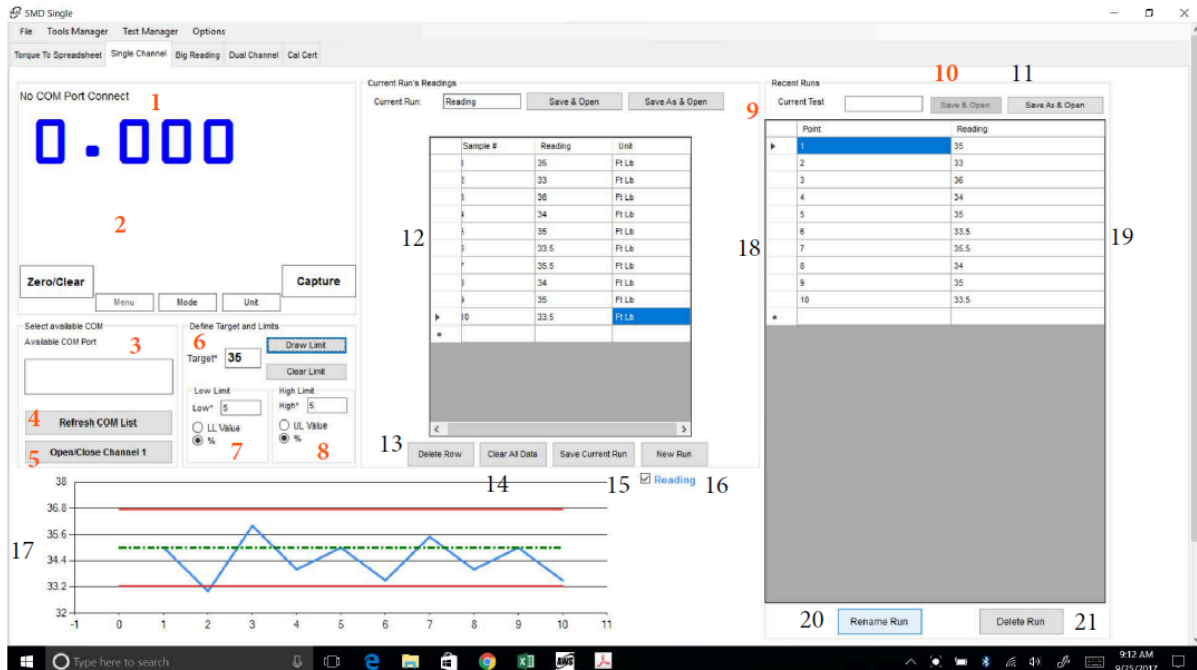
- 3.** Shows List of Available Testers that can be connected to the TTS Application.  
To connect to non Intellect Tester, go to Options Turn on “Show All COM Available”.
- 4.** Refresh available COM list.
- 5.** Open or Close Channel 1.
- 6.** Select how many sets of Readings (per row) before the cursor moves to next row in Excel Spreadsheet.
- 7.** Reset the Count for Readings per row.
- 8.** Start or Stop Spreadsheet Mode that parses data from Tester to an Excel Spreadsheet.
- 9.** Send Reading Only Torque To Spreadsheet User can select Reading only or Memory Location, Reading, Engineering Unit, Date and Time if available to Excel.

## 3. Single Channel

### 3.1 Overview

This TTS module allows the user to define Target, Low Limit, and High Limit. This option populates captured Readings into the graph using the defined Target and Limits. Exporting to Excel will also place the graph into the spreadsheet.

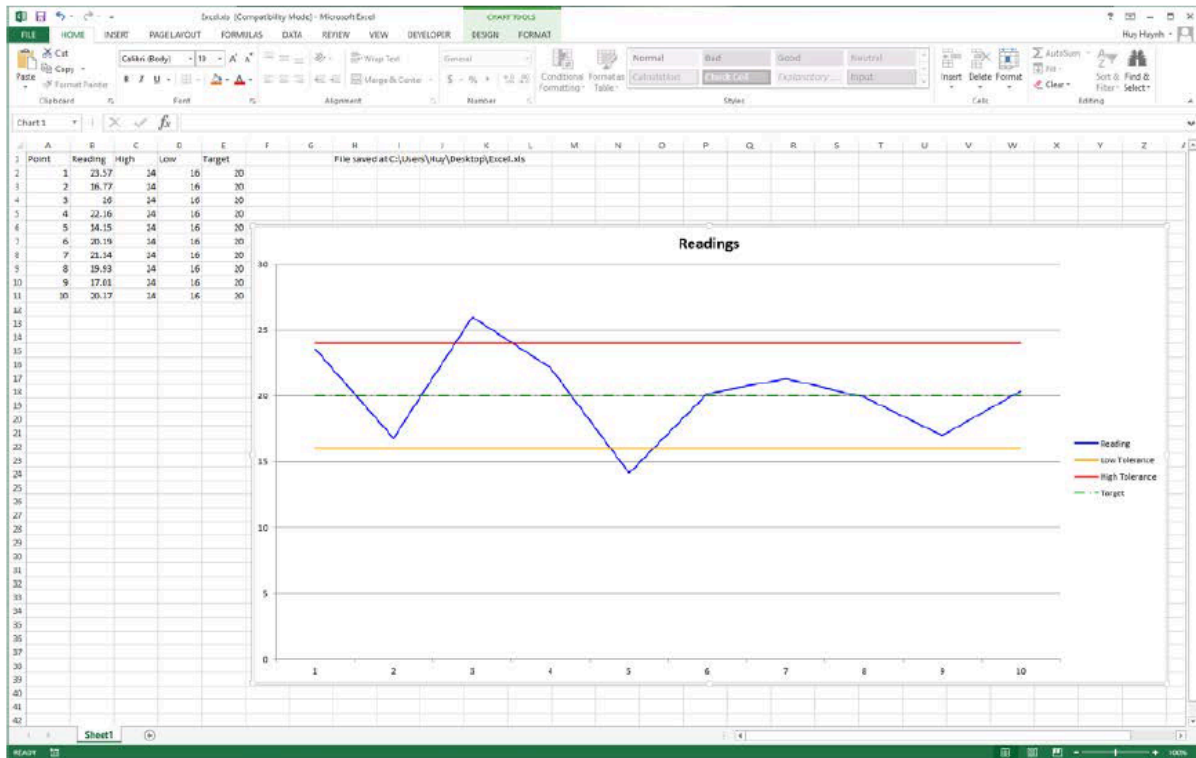
### 3.2 Instruction



1. Shows the current COM Port Connected and Full Scale of Tester that is connected.
2. Shows Live Reading and Measurement Units of the Tester Connected. If connected to Intellect Tester, user can also control Tester using the TTS application. Sending parameter setup commands to the Tester - Unit, Mode, Menu, Zero/Clear
3. Shows List of Available Testers that can be connected to TTS application. To connect to non Intellect Tester, go to Options Turn on "Show All COM Available".
4. Refresh available COM List.
5. Open/Close Channel 1 Connect or Disconnect the Tester.
6. Define a Target. This Target applies to all Readings taken in this module.
7. Define Low Limit, select from % of Target or Absolute Limit Value. This Limit applies to all Readings taken in this Mode.
8. Define High Limit, select from % of Target or Absolute Limit Value. This Limit applies to all Readings taken in this Mode.
9. Show the Name of Current Run. User can also change the Current Run Name from here.
10. Save & Open or Save As and Open Exports the Current Run Readings to Excel. Excel File will be saved under The Quick Export Path or destination of User's choice (See File Define Quick Export Path). See pic:

# TTS-SC

## Software



11. Export the Current Run Readings to Excel. This option allows user to choose the specific path to Save, instead of Default to Quick Export Path.
12. This Grid View shows the recorded Readings for current Run.
13. Delete the current Row that user is selecting on current Run's Grid View.
14. Clear All the Data in Current Run's Grid View.
15. Save the Current Run Reading into Recent Run's Grid View on the right.
16. New Run Save Current Run into Recent Run Grid view and start new current Run.
17. Show the live Graph, along with Target, Low and High Limit (Dotted Green and Solid Red Horizontal Line).
18. Similar to functions described in points 9, 10 and 11; but applies for the complete Test (which includes all the Saved Runs and Current Run).
19. Show the Readings for all Saved Runs.
20. Allow user to change the names of all Saved Runs.
21. Allow user to Delete all the Saved Run (Current Run cannot be deleted). Use Clear All Data button under Current run table to clear.

# TTS-SC

## Software

### 4. Big Reading

#### 4.1 Overview

This TTS module changes the display so that User's can easily see readings and Pass/Fail when conducting a test in Channel 1. There are multiple "buttons" for Size +, Size -, Low Limit, High Limit and Target. The display has Pass/Fail and Refresh COM List and Open/Close Channel 1 to facilitate communication.

